



ESA Consultores
Economía, Sociedad, Ambiente e Ingeniería

Institutional Presentation



Building San Miguel N°1359, Neighborhood La Plazuela
Tegucigalpa, Honduras.



PBX: (504) 2220 - 1713
FAX: (504) 2238 - 8572



esa@esa.hn
hcardenas@esa.hn / fleiva@esa.hn



www.esa.hn

INDEX

Introduction	Pg.4
Firm Main Strengths	Pg.6
Associations and Strategic Alliances	Pg.8
International Presence	Pg.9
Our Clients	Pg.10
Specialty Areas	Pg.12
• Economy	Pg.13
• Society	Pg.14
• Environment.....	Pg.16
• Engineering	Pg.17
• Geographic Information System	Pg.18
• Surveys.....	Pg.19
• Community and Municipal Development	Pg.20
• Private sector	Pg.21
Consulting Team	Pg.22
Experience and Projects	Pg.23



ESA Consultores

Economía, Sociedad, Ambiente e Ingeniería

Offers professional consulting services in the following areas:
Economy, Society, Environment and Engineering to the public and private sectors.
We have carried out projects and studies throughout the Central American region, the Caribbean, South America, Africa, the Middle East and Central Asia.

MORE THAN 20 YEARS OF
EXPERIENCE

OVER 300
PROJECTS

INTERNATIONAL AND
LOCAL TALENT



- Providing Services to Public and Private clients in Latin America since 1992
- Multidisciplinary team
- Access to National and International Experts
- Recognition for the quality of the services provided
- Meeting customer needs
- We have an updated Technological Support
- Reliability in the Methodology used in their research

“ We are a consulting firm diversified in services in the areas of Economy, Society, Environment and Engineering, with extensive capabilities in various disciplines ”

Among the main strengths of the firm is its versatility, that allows to meet the specific needs of each client. A wide variety of specialties are identified.

Services of Consulting in the Area of Economy	Services of Consulting in the Social Area	Consulting Services in the Area of Environment	Consulting Services in the Area Engineering	Consulting Services in the Area of Surveys
<ul style="list-style-type: none"> • Social, Economical and Financial Evaluation of Projects. • Macroeconomic Policies. • Competitiveness and Reduction of Poverty. • Social politics • Sector Development private • Municipal Development • Forestry • Agro industry • Cluster Analysis • Socioeconomic Studies • Cost Analysis • Efficiency • Statistic analysis. 	<ul style="list-style-type: none"> • Social projects • Assessment • Health • Education • Social Investment funds • Social protection • Social politics. • Comprehensive neighborhood improvement plans • Expost evaluation • Institutional Strengthening . • Design and Implementation of Social programs • Home • Water and Sanitation Social Assessment 	<ul style="list-style-type: none"> • Environmental Studies • Environmental impact Assessment • Environmental Management plans • Environmental Audits • Handling and Planning of Hydrographic Basins. • Territorial Ordering Plans. • Agricultural Extension • Solid Waste Management • Geographical Information Systems 	<ul style="list-style-type: none"> • Design of Drinking and Wastewater Systems • Structural Designs • Potable Water Systems Assessment • Supervision of Drinking Water and Sewerage construction sites. • Tariff Studies • Designs and Feasibility Studies • • Due Diligence • • Availability of Payment for Services Studies • • Technical support • • Infrastructure 	<ul style="list-style-type: none"> • Households Surveys. • Quantitative Studies • Qualitative Studies • Focus groups • Participative Evaluations • Key Informants • Base lines • Elaboration of Census • Monitoring • Sales Points Census • Econometric Studies • Market Investigation • Business plans



ECONOMY

SOCIETY

ENVIRONMENT

ENGINEERING

SURVEYS

AGRICULTURAL
DEVELOPMENT

PRIVATE
SECTOR

GEOGRAPHIC
INFORMATION
SYSTEM



Strategic Associations and Alliances

with recognized local and international firms, they enhance our capabilities.

HONDURAS

 **BEINSA**

ESTADOS UNIDOS

  **NORC** at the UNIVERSITY of CHICAGO  **Agland Investment Services, Inc.**
GLOBAL AGRICULTURE, FOOD, AND RESOURCE CONSULTANTS

ITALIA

 **GICO** **LOTTI**

FRANCIA

 **setec international**

ESPAÑA

  **Ardanuy**

ALEMANIA

NICARAGUA

 **CABAL, S.A.**

VENEZUELA



PERÚ

 **GRADE**
Grupo de Análisis para el Desarrollo



We have developed projects in Central America, The Caribbean, South America, Europe, Asia, Africa and Middle East for Clients in **20 COUNTRIES**

Centro America	El Caribe	Sur America	Europa	Asia	África	Medio Oriente
Guatemala	Santa Lucía	Guayana	Moldavia	Filipinas	Egipto	Yemen
Belice	República Dominicana	Venezuela	España	Turkmenistán		
El Salvador	Jamaica	Perú				
Honduras	Haití					
Nicaragua						
Costa Rica						
Panamá						

Our Customers



ESA Consultores clients are made up of public and private organizations, Secretaries of State and other government agencies, universities and private institutions.

 <p>Aerowind</p>	 <p>Canadian International Development Agency Agence canadienne de développement international</p> <p>Canada</p>	 <p>german cooperation DEUTSCHE ZUSAMMENARBEIT</p> <p>Implemented by giz Deutsche Gesellschaft für Internationale Zusammenarbeit (GIZ) GmbH</p>	 <p>ALCALDIA MUNICIPAL DEL DISTRITO CENTRAL</p>
 <p>JICA</p> <p>Agencia de Cooperación Internacional del Japón</p>	 <p>Agua de Puerto Cortés</p> <p>PROPORCIONAR SALUD, BIENESTAR Y SATISFACCIÓN ES NUESTRA RESPONSABILIDAD</p>	 <p>ACDI VOCA</p> <p>Expanding Opportunities Worldwide</p>	
 <p>BCIE</p>	 <p>BID</p> <p>Banco Interamericano de Desarrollo</p>	 <p>WORLD BANK GROUP</p>	 <p>Pollo Rey</p> <p>CADECA</p>
 <p>Chiquita Brands International</p>	 <p>COLENCO</p> <p>Colenco Power Engineering AG</p>	 <p>Comunidad Unión Europea</p>	 <p>COHEP</p>
 <p>Schweizerische Eidgenossenschaft Confédération suisse Confederazione Svizzera Confederaziun svizra</p> <p>Swiss Agency for Development and Cooperation SDC</p>	 <p>CUENTA DEL DESAFÍO DEL MILENIO HONDURAS</p>	 <p>Cuerpo de Ingenieros del Ejército de los EE.UU.</p>	 <p>UKaid from the British people</p> <p>Department for International Development</p>
 <p>ENP</p> <p>EMPRESA NACIONAL PORTUARIA</p>	 <p>ERM</p>	 <p>Ficohsa</p> <p>GASPRO</p>	 <p>invest-H</p> <p>Inversión Estratégica de Honduras</p>



NARANJA REPUBLIC



BARRIO CREATIVO

Other Important Customers:

- Municipal Mayor of Nueva Arcadia.
- Honduras-Switzerland Countervalue Fund.
- Jamaica Social Investment Fund.
- Moldovan Social Investment Fund.
- Municipality of Copan Ruinas.
- Municipality of Puerto Cortes.
- Comprehensive Attention Program for Nicaraguan Children.
- Technical Support Unit of the Secretary of State of the Presidential Office



Areas of Specialty

ECONOMY



We offer research and economic analysis services to clients in the sectors: private and public, we have Economists, Econometrists, associate consultants and specialists in different aspects of economic analysis

Among the main areas of our expert knowledge, we can mention:

- Cost-Benefit and Cost-Effect Analysis, including contingent valuation of the benefits of environmental and social projects.
- Financial Analysis of Projects and Organizations.
- Market studies.
- Economic Analysis of the Social Sector: water and sanitation, health, education.
- Environmental economics.
- Macroeconomic Analysis.
- Sector Analysis: agricultural, forestry, financial, banking and infrastructure

Macroeconomic Policy, Competitiveness and Poverty Reduction

ESA Consultores is committed to strengthening competitiveness as a tool to accelerate growth and reduce poverty. We have participated in the analysis of key factors to promote competitiveness in Honduras - via the drafting of the Honduran Agenda for Competitiveness and Sustainable Development - and in the design of the Poverty Reduction Program.

Social, Economic and Project Finance

ESA Consultores has extensive experience in the application of standard techniques of social, economic and financial evaluation of projects, both ex-ante, for line of base and ex-post using methodologies both quantitative and qualitative. We use the Logical Framework methodology for the identification of variables and project monitoring indicators.



SOCIETY

ESA Consultores, brings together one of the most prominent Social and Demographic Research groups in the Central American region. We have a long history and extensive experience in Social Policies

Among the main areas of our expert knowledge, we can mention:

- Design, execution and statistical and econometric analysis of household and workplace surveys.
- Social-qualitative analysis, through focus groups and structured individual interviews.
- Design and Evaluation of Social Development Projects using the Logical Framework methodology.
- Gender Analysis.
- Social Evaluation of Projects.
- Institutional and Legal Analysis.
- Design and programming of information and monitoring systems for Development projects



Education

Education is an essential instrument for poverty alleviation and social equity, as well as for achieving long-term objectives of economic competitiveness. ESA Consultores has a specialized practice in the educational sector of Honduras, through which it has carried out consultancies for international organizations in support of the Government of Honduras through the Ministry of Public Education of Honduras. ESA Consultores has a respectable track record in the field of training within the framework of its projects.

The following components stand out in the area:

- • Improvement of Educational Quality.
- • Youth Participation.
- • Women and Gender.
- • Formulation of Social Public Policies.
- • Socioeconomic Research and Participatory Diagnostics



Health

For ESA Consultores, the development of this area should seek to improve the health conditions of the most unprotected population, through the transformation of the care model. Also, seek the improvement of institutional efficiency through operational strengthening and the introduction of changes in the field of health systems that allow adapting the institutional and social scenarios to implement substantial reforms to power.

Among the main areas of our expert knowledge, we can mention:

- • Design of Processes for Deconcentration or Decentralization of Services.
- • Management of Community Participation Processes in Health Committees.
- • Support for the Modernization of Management in Health Systems.
- • Design of Basic Health Packages.
- • Strengthening of Preventive Health Programs.
- • Nutritional Improvement.
- • Design and Implementation of Information Systems



Social Investment and Social Protection Funds

In addition to promoting the economic development of the country, the social well-being of its population must be sought through programs aimed at improving sectors such as health, education, basic services and housing. ESA Consultores has developed good expertise in social policies and programs. We have extensive experience in the

development of Reform strategies to various social sectors and we have proposed recommendations on relevant aspects considered for the welfare of society.

ENVIRONMENT



ESA Consultores has established itself as a leader in environmental consulting and natural resource management for the public sector, multilateral and bilateral organizations, private development

Among the main areas of our expert knowledge, we can mention:

- Environmental Impact Assessments (EIA).
- Geographic Information Systems (GIS).
- Watershed Management Plans.
- Management Plans for Protected Areas.
- Land Use Plans.
- Management Plans and Execution of Forestry and Agroforestry Activities.
- Environmental Audits.
- Environmental legislation.
- Environmental Policies.
- Agricultural Extension Services.
- Waste management.

The increasing environmental degradation in Central America and the Caribbean poses great challenges for Environmental Management in both urban and rural areas. ESA Consultores has developed its capacity and experience in environmental studies, as instruments for the diagnosis and solution of said problem. Our environmental studies address aspects of the physical-natural environment (geology, hydrological soils, limnology, flora, fauna, protected natural spaces and natural disasters), as well as a study of the socio-economic and cultural environment, which allows a more expeditious and effective environmental management .



ENGINEERING

ESA Consultores has extensive experience in conducting studies for the Potable Water and Sanitation sector, combining experience and Knowledge, our engineers achieve economic and environmentally efficient and effective solutions.

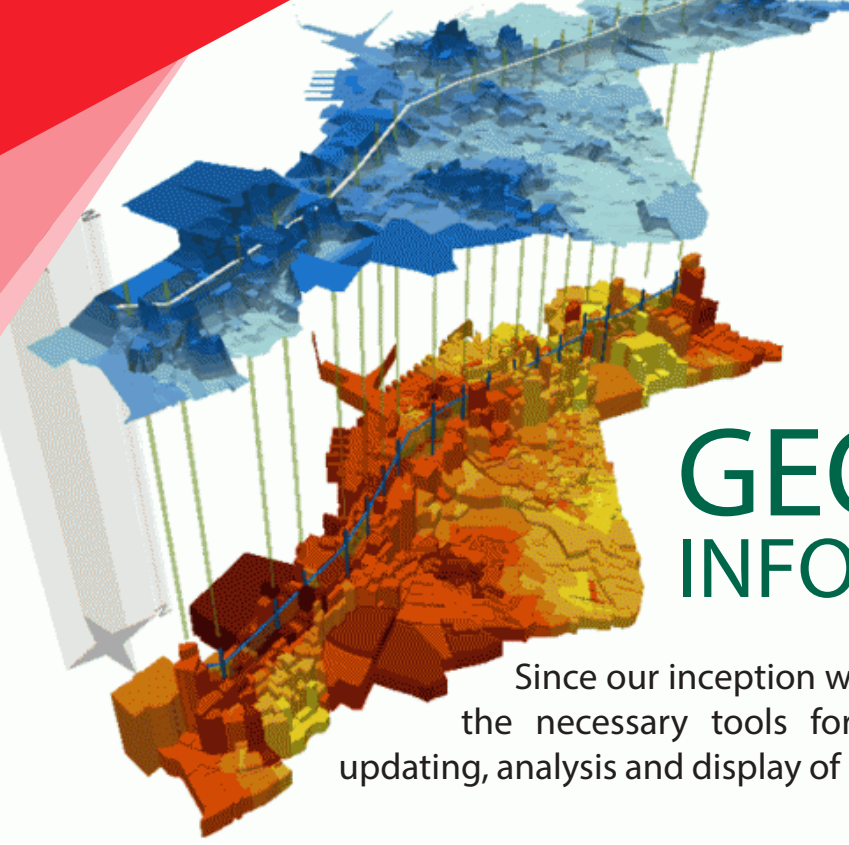
Among the main areas of our expert knowledge, we can mention:

- Design of Drinking Water Supply Systems.
- Sanitary Sewer Design.
- Structural Designs.
- Evaluation of Drinking Water Systems.
- Supervision of Potable Water and Sewerage Works.
- Tariff Studies.
- Designs and Feasibility Studies.
- Due Diligencies.
- Rate Structure Calculations.



Supervision of works and Feasibility Studies

ESA Consultores, has extensive experience in Sanitary Sewerage Supervision and Feasibility Studies. The feasibility studies for the water and sewerage systems have been oriented towards improvements to the existing Drinking Water and Sanitary Sewerage Systems in the Municipalities. ESA Consultores has advised most of the municipalities in Honduras, including the most important ones, such as the Municipality of Tegucigalpa and San Pedro Sula, in the process of municipal strengthening and in the execution of works in the sectors of institutional strengthening, drinking water and sewerage, solid waste, slums, transportation, and roads.



GEOGRAPHIC INFORMATION SYSTEM

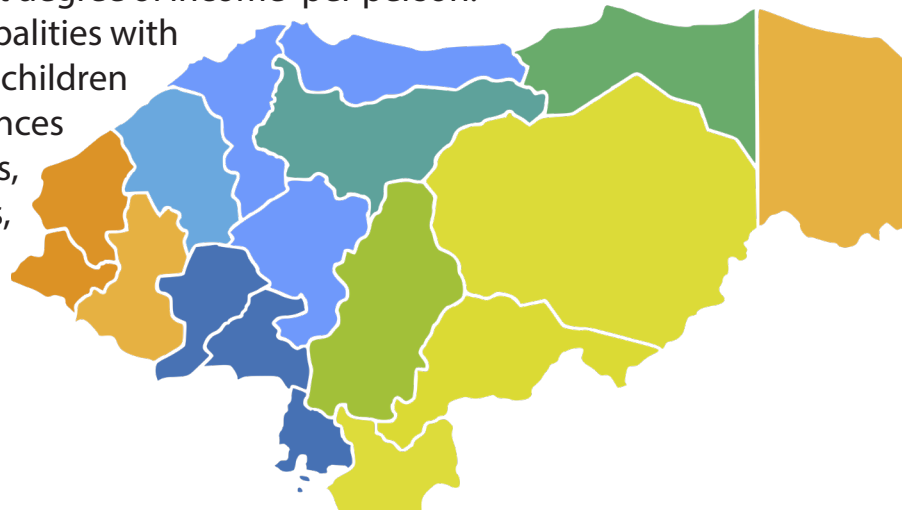
Since our inception we have used the GIS system, since provides the necessary tools for collecting data from field, processing, updating, analysis and display of information geographic and alphanumeric.

Among the main GIS services that we offer we can mention:

- Topographic Surveys.
- Digitization
- Elaboration of Thematic Maps.
- Preparation of Plans.
- Updating of Geographic Data.
- Creation of new maps from existing maps.
- Generation of new maps from existing geometric data in CAD

The Geographic Information System is very versatile and has application in multiple areas of specialty in the company. Currently applied in:

- **Environmental Area:** By incorporating demographic information from the database, the system will facilitate the estimation of areas and populations affected by emissions pollutants
- **Economic Area:** Creation of maps that focus the cities with the highest degree of poverty or cities with the highest degree of income per person.
- **Social Area:** Mapping of municipalities with higher degree of malnutrition in children by age, collection of remittances from abroad, migrations, concentration of AIDS cases, higher birth rates, violence





SURVEYS

ESA Consultores, is one of the most experienced quantitative research organizations in the region, we have experts in sampling, questionnaire design, supervision and quality control in the field and databases.

Among the main areas of our expert knowledge, we can mention:

- Household Surveys.
- Quantitative Studies.
- Qualitative Studies.
- Points of Sales Census.
- Contingency Assessment Surveys.
- Agricultural Surveys.
- Baseline.
- Surveys for the Cordial Greetings Area.
- Surveys for the Education Area.

ESA Consultores, has conducted more than 25 large surveys with samples of 6,000 households and complicated questionnaires. Several of these studies have been implemented in renowned institutions.

Due to the importance of the statistics derived from the surveys, it is essential that they are carried out with strict quality control in order to guarantee the fidelity of the resulting information. We have the infrastructure, hardware and software, the experience and all the logistics necessary to carry out large-scale surveys.



COMMUNITY AND MUNICIPAL DEVELOPMENT

ESA Consultores has supported the process of decentralization of the Government system and Public Administration, which constitutes one of the central axes of the processes of modernization of Central America.

Among the main areas of our expert knowledge, we can mention:

- Municipal Development Strategy and Programs.
- Sector Development Strategies.
- Municipal Finance.
- Project management.
- Local Economic Development.
- Low Cost Housing.
- Environmental Services: Drinking Water, Sewerage, Solid Waste.
- Municipal Technical Assistance.
- Community Development.
- Monitoring and Evaluation of Programs

We have designed institutional strengthening strategies and tools for a successful municipal management that includes the definition of an institutional framework, technologies appropriate to the particular needs of the municipalities and efficient management of your finances. We propose the creation of city development strategies, analyzing their current situations to discover their vocations. Our goal is to work with national governments and credit and cooperation agencies, as well as with municipal associations and with individual municipalities in promoting and advancing regional and national municipal / local development programs promoted in all the countries of the isthmus



PRIVATE SECTOR

We have worked with clients in the Private Sector, providing the staff, skills and knowledge necessary to carry out your projects.

Among the main areas of our expert knowledge, we can mention:

- Studies and Surveys.
- Business plans.
- Marketing Studies.
- Trainings and Workshops.
- Infrastructure.
- Environmental Diagnostics.
- Evaluation of Projects and Programs.
- Environmental Impact Assessment Study (EIA).

The current trend in development policies is towards decentralization and Strengthening of private companies to generate jobs. ESA Consultores has supported private sector development in various ways. We have carried out Business Plans, as well as Due Diligence studies in the economic-financial, market, environmental and social aspects. ESA Consultores, has experience in the following sectors: Banking, telecommunications, tourism, labor markets, maquila, microenterprise, forestry sector, agro-industry and cluster analysis.

STAFF



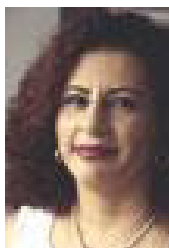
Helmis Cárdenas/ General Manager

Economist with a master's degree in Economic Policy from the University of Illinois, USA and a master's degree in Economics and Development Planning from the Central American Postgraduate Program in Economics (POSCE) from the National Autonomous University of Honduras. He is an expert in financial and economic analysis of social and environmental projects, in financial and administrative aspects of the design and transformation of development projects, and in macroeconomic and sector analysis.



Rafael del Cid/ Social Analysis and Policy Division Coordinator

Sociologist and demographer with a doctorate from the University of Texas. Specialist in social research and in the design and analysis of policy, programs, and projects and author of academic studies on the informal sector, gender, and decentralization.



Florencia Rodríguez/ Survey Area Coordinator

Civil Engineer, specialist in the design and supervision of household surveys, qualitative / participatory evaluation related to the design and evaluation of social projects and market research. It has implemented more than 20 large household surveys and censuses in six different countries in Central and South America.



Carla Rivera/Environmental Area Coordinator

Biologist, with a Ph.D. in natural resources and environment from the University of Santiago, Spain and a master's degree in Oceanography and Limnology from the University of Wisconsin-Madison, USA. She has extensive experience in environmental impact assessments, biological assessments (Terrestrial and Aquatic), qualitative environmental diagnostics, watershed management, wildlife, land use, limnological analysis, environmental policy, and legislation.



Fidel Ordóñez / Statistical Analysis Area Coordinator

Mathematician, with a master's degree in Statistics from the University of Chile and a master's degree in Population and Demography from the National Autonomous University of Honduras. He is an expert in sample design and in the statistical and econometric analysis of socio-economic surveys. He has been responsible for the design and analysis of many household surveys and censuses.



Marco Moncada / Senior Consultant in Economics and Finance

He has studies in Economics (at the master's and doctoral levels) with a concentration in economic development, labor and international economics from Virginia Polytechnic Institute, USA in addition, he has an interdisciplinary base in engineering from UNAH and the University of Iowa, USA and project evaluation of the Universidad Católica de Chile.

EXPERIENCE AND PROJECTS

- Baseline Formulation for the Tegucigalpa and Comayagüela Historic Center Project. **Client: Naranja Republik.** *August 2020 – Currently in execution*
- Feasibility Study of a Cableway Transport Network for the Municipality of the Central District of Francisco Morazán, Honduras (Transport Demand, Transport Supply, Project Design, Tariff Study, Environmental Impact Assessment, Resettlement Plan). SETEC/ARDANUY/ESA Consultores. **Client: BCIE / AMDC** – *January 2020. Currently in execution*
- Consulting Services for the Preparation of the Management Plan for the Quebrada El Zapote Micro-basin. **Client: INVEST-H.** *September 2019 - February 2020*
- Review of Environmental and Social Regulations and Procedures for the Honduras Liquefied Natural Gas (LNG) Energy Project. **Client: ERM.** *August 2019*
- Perceptions Baseline Security in a sample and Stay Resident in the target communities of the municipalities of the Central District, San Pedro Sula, Choloma, La Ceiba and Tela of the Together in Action Program for Coexistence. **Client: Chemonics.** *April - September 2019*
- Performance Evaluation of Feed the Future Programs in Honduras. **Client: NORC.** *August 2018 - July 2019*
- Baseline Diagnostic Systems Market. **Client: ACDI- VOCA.** *January / February 2019.*
- UMBRAL Public Employee Survey - Project THRESHOLD. **Client: Social Impact.** *September 2018 - January 2019*
- Consultancy for the Preparation of the Environmental Measures Compliance Reports (ICMA) of the Dredging and Construction Project of the Maritime Container Terminal of Operadora Portuaria Centroamericana (OPC), Honduras. **Client: Operadora Portuaria Centroamericana (OPC).** *December 2017 - August 2018*
- Information gathering, typing and data delivery Data Bases Clean and Organized by Value Chain (Coffee and beans) for Baseline Study for Sustainable II Agricultural Improvement Program (MAS II). **Client: TECHNOSERVE.** *June 2018 - December 2018*
- Environmental Impact Assessment Study (EISA / EIA) and the Environmental Management Plan (PGA) for the Operation Project of Docks 4,5 and Related Works of the Central American Port Operator (OPC), Honduras. Central American Port Operator (OPC). **Client: Operadora Portuaria Centroamericana (OPC).** *January - May 2018*
- Multi-Level Survey on Access to Energy in Households in Honduras. **Client: World Bank.** *January 2017 - February 2018*
- Shadow Flicker Study Wind Power Project II San Marcos, San Marcos de Colon, Choluteca. **Client: VESA.** *2017-2018*
- Consulting Baseline Study for the three technical programs: (1) Adaptation to Climate Change (2) Life Skills and Employability Youth and (3) Free of Violence NNAJ implemented by World Vision. **Client: World Vision.** *2017.*

- Environmental Impact Assessment Study of the Storage, Packaging and Distribution Station of Air Gases and Carbon Dioxide, as well as Acetylene Storage and Distribution. **Client: Gaspro Latinoamerica SA** *May- November 2017*
- Environmental Impact Assessment of the Dredging and Construction Project of the Maritime Container Terminal (Pier No. 6). **Client: OperadoraPortuariaCentroamericana (OPC).** *March - October 2017.*
- Environmental Impact Assessment of the San Marcos Wind Energy (SMWE) Wind Project, San Marcos de Colón, Choluteca, Honduras **Client: NORDEX-Eólicos Inc.** *May - July 2018*
- Environmental Impact Assessment of the Los Tablones / San Juan de Ojojona Wind Project, Honduras Phase II Grupo Guatemala **Client: Aerowind.** *March - November 2017*
- Consultancy to Support the Development of National REDD+ Strategy in Honduras. **Client: UNDP.** *February 2017-October 2018*
- Environmental Impact Assessment of Los Tablones Windpower Project, San Juan de Ojojona, Honduras. **Client: Aerowind.** *May 2015 - March 2016.*
- Conducting Specific Studies to Answer the Open Questions for the Preparation of the Credit Application Phase I of the Territorial Water Governance Program of the Gulf of Fonseca Region. **Client: COSUDE.** *2016*
- Consulting Services for Identification and Socialization for the Construction of Water Harvest Reservoirs in the Dry Corridor of the Country. **Client: FICOHSA-INVESTH.** *2016*
- Baseline for the Independent Evaluation of the “MCC Honduras Threshold Project” **Client: Social Impact.** *2016*
- Multi-level survey on Access to Energy in Honduras Homes. **Client: World Bank.** *Year. 2016.*
- Baseline for the Impact Evaluation of the Sustainability Project of the Rural Water and Sanitation Sector of Nicaragua. Government of Nicaragua. **Client: World Bank.** *September 2015 - January 2016*
- Potential Resettlement Assessment of the San Marcos Windpower Project, San Marcos de Colón, Honduras. **Client: Vientos de Electrotecnia (VESA) – TERRA Group.** *August 2015 – November 2015.*
- National Consultancy to Evaluate the Results and Scopes in the Application of the Hourly Employment Law. **Client: STPS.** *2015*
- Public opinion survey on services in Tegucigalpa, Honduras SDP No. 14-046. **Client: Inter-American Development Bank IDB / Washington.** *2015*
- Mid-Term Assessment of Three PATH II Indicators. **Client: PATH II.** *2014-2015*
- Environmental Impact Studies for the Five Wind Projects (Cahuasca, Mancha de Roble, Quesera, Barranquilla, Chinchayote) Located in San Marcos de Colón, Choluteca. **Client: Eólicos R4E SA de CV / NORDEX.** *2013, 2014-2015*
- Environmental Impact Assessment of the Chinchayote Wind Project, San Marcos de Colón, Choluteca. **Client: Vientos de San Marcos SA de CV (VESAM) / Grupo Terra.** *2014-2015*
- LOT1- Development of geoportal and GEO services for spatial data interoperability - Spatial Data Infrastructure (IDE) of the Forest Sector in Honduras. **Client: GESP.** *2014*

- Baseline Study on Opinion and Perception on Disaster Risk Management in 20 Municipalities of the Sula Valley in Honduras. **Client: World Bank and Risk Management Program (PGDR - COPECO).** 2014
- National Consultancy for the Development of the Monitoring and Evaluation Process of the “Con Chamba Vivís Mejor” Program 6 months after it started. **Client: Secretary of Labor and Social Security (STSS).** 2014
- Public Opinion Survey in Tegucigalpa in the Framework of the Initiative for Emerging and Sustainable Cities (ICES) **Client: IDB.** 2014
- Baseline Survey for the Evaluation of Component 1 of the Primary Education and Technological Integration Program (IDB-HO 2524). **Client: IDB.** 2013
- • Follow-up Survey of Compliance with Co-responsibilities Beneficiaries of the Bono 10,000 Program. **Client: NORC / PRAF.** 2013
- Holder Satisfaction Survey of the Bono10,000 Program in Urban Areas. **Client: IDB.** 2012 – 2013.
- Environmental Impact Assessment-Rainy Season Campaign and Environmental Analysis Los Llanitos and Jicatuyo Hydroelectric Plant. **Client: ODEBRECHT.** 2012
- Environmental Impact Assessment San Marcos Wind Farm and Bijagual Transmission Line, Santa Lucia. **Client: Vientos de Electrotecnia (VESA).** 2013
- Baseline Survey for the Impact Evaluation of the 10 Mil Bonus Program. **Client: NORC / SDP.** 2012
- Baseline Survey for the Impact Evaluation of the Trifinio ICP Regional Project in Guatemala, Honduras and El Salvador. **Client: EDE Consulting.** 2011
- PEFA evaluation in Honduras. **Client: NORC.** 2011
- Design of the Monitoring and Evaluation System and Cost Benefit Analysis of the Indigenous Population Project, Renewable Energy and Climate Change Project in Honduras. **Client: Nordic Development Fund.** 2011
- Baseline for the Impact Evaluation of the PROEMPLEO Program. **Client: Secretary of Labor and Social Security.** 2011
- Traffic Survey as part of the Final Evaluation of the Transportation Component of the MCA-Honduras Millennium Challenge Account. **Client: NORC / MCA-Honduras.** 2011
- Lifting of the Baseline for the Joint Water and Sanitation Program in Honduras. **Client: PAHO / WHO.** 2009-2010
- Construction Supervision of Sanitary Sewerage of Copan Ruinas. **Client: Municipality of Copan Ruinas / BID.** 2008-2011
- Consulting for Diagnosis and Support in the Social and Financial Area of Cuatro Mancomunidades for the Execution of the Rural Infrastructure project. **Client: FHIS / PIR.** 2008-2010
- Contracting for the Implementation of Health Services for the Extension of Coverage of the Comprehensive Strategy to Children in the Community (AIN-C), in the Departments of Lempira, Intibucá, La Paz and Copán. **Client: Secretary of Health / IDB.** 2008-2009.

- Environmental Impact Assessment Study (EIA) for Port Facilities Construction Projects: Pier No. 6 “New Container Terminal” and Pier No. 7 Solid Bulk Terminal of Puerto Cortes. **Client: ENP. 2008-2009**
- Expenditure Tracking Survey and Service Delivery in the Health and Education Sectors in Honduras. **Client: World Bank / IDB. 2008-2009**
- Policymaking Process in Honduras **Client: World Bank. 2008**
- Second Measurement of the Program Indicators, Component 2, Module 3, Levels 1, 2 and 3. **Client: MARENA. 2007-2008**
- Baseline Survey of the Selected Villages in Lot No. 4 Copán. **Client: Ministry of Health, Nutrition and Social Protection Project. 2008-2009**
- Baseline for the Impact Evaluation of the Second Round of the My First Job Program. **Client: National Opinion Research Center (NORC). 2007**
- Environmental Management Plan for the Improvement of the CA-5 North Highway Project. **Client: Millennium Challenge Account (MCA). 2007**
- Preparation of the Integrated Water Resources Management Plan for the Reitoca Sub-basin. **Client: Secretariat of Natural Resources (SERNA). 2007**
- Baseline Survey and Adaptation of the Logical Framework of the Second Phase of the Poverty Reduction and Local Development Program - IDB 1478 / SF-HO Program. **Client: Honduran Social Investment Fund (FHIS). 2006**
- Evaluation of Maternal-Infant Clinics (CMI): Demand Study. **Client: World Bank. 2006-2007**
- Evaluation of the MCA-HONDURAS Program. **Client: UI-NORC-MCA. 2007-2010**
- Points of Sale Census. **Client: Compañía Cervecería de Nicaragua. 2005**
- Situational Diagnosis and Training Plan for the Community Forestry Sub-project in the Communities of the Municipality of Santa Rita, Yoro. **Client: Forests and Rural Productivity Project. 2005**
- Environmental and Institutional Strengthening for the Development of the Water and Sanitation Sector of Peru. **Client: Colenco Power Engineering. 2005**
- Impact Evaluation of the Yemen Social Development Investment Fund FDSY. **Client: Department for International Development DFID. 2005-2007**
- Consulting Services for the Preparation of Feasibility Studies and Final Designs for Improvements to the Drinking Water and Sanitary Sewerage Systems in 12 Municipalities of Honduras. **Client: Ministry of Finance of Honduras (SEFIN). 2005-2007**
- Preparation of the Integrated Water Resources Management Plan for the Lake Yojoa Sub-basin. **Client: Secretariat of Natural Resources (SERNA). 2005**
- Consultancy for the Design and Implementation of the Information, Supervision, Monitoring and Evaluation System of the Youth Training and Labor Insertion Project. **Client: Honduran Social Investment Fund (FHIS). 2005**
- Updating of the Municipal Social Investment Plans (PISM) in 10 Municipalities of the Departments of Copán, Ocotepeque and Santa Bárbara. **Client: Honduran Social Investment Fund (FHIS). 2005**

- Design of Methodology for the Formulation of Comprehensive Neighborhood Improvement Plans within the Framework of the National Comprehensive Urban Development Project of Honduras. **Client: Honduran Social Investment Fund (FHIS).** 2005
- Technical Support in the Management of Protected Areas of the Bay Islands. **Client: PMAIB.** 2005-2008



ESA Consultores

Economía, Sociedad, Ambiente e Ingeniería